

VENTILATION REQUIREMENTS FOR DOMETIC MINIBARS

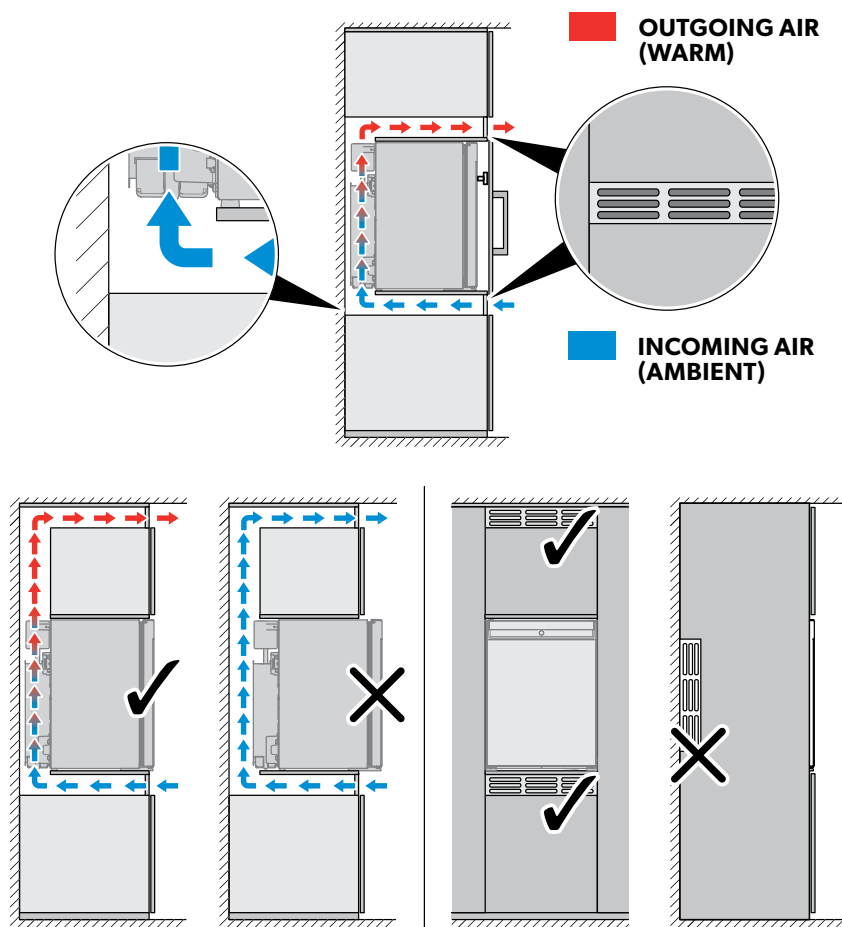
To ensure **optimum cooling performance** with minimum energy consumption, several basic principles need to be followed when installing a minibar. The heat which the cooling unit extracts from the refrigerator interior is emitted at the back of the minibar.

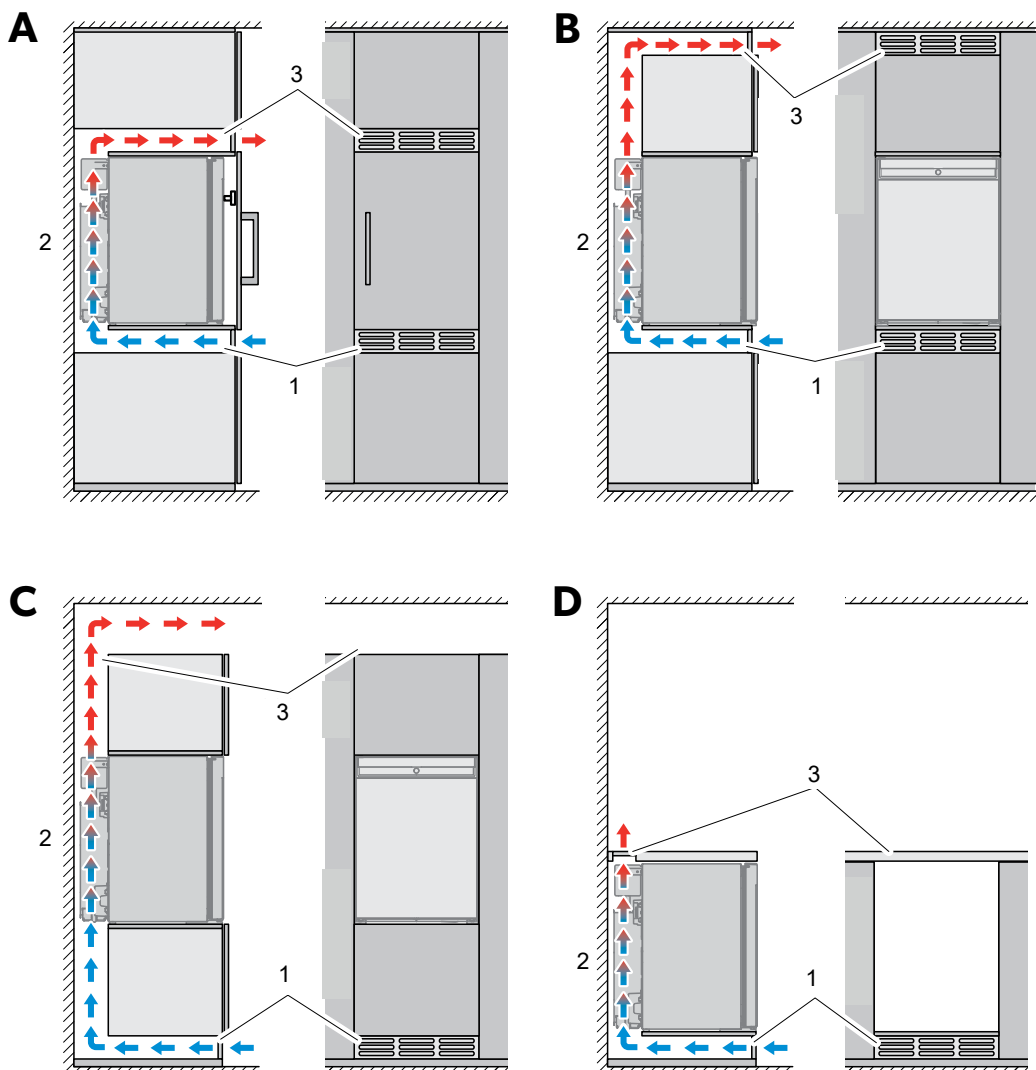
There must be **sufficient ventilation** to prevent build-up of hot air which will reduce the cooling capacity, increase energy consumption, and lower the unit's lifespan. The free ventilation space for incoming air for HiPro Absorption and Compressor minibars should be at least 150 cm² or 24 in² and outgoing air at least 200 cm² or 31 in², while for HiPro NTE series, the space for the incoming and outgoing air should be at least 200 cm² or 31 in². The free ventilation space for the drawer minibars DM50C Compressor and DM20 Thermoelectric should be at least 200 cm² or 31 in² for incoming and outgoing air, while for the DM50NTE Thermoelectric the space for the incoming and outgoing air should be at least 400 cm² or 62 in².

When installing the minibar, ensure that it is standing on a stable and horizontal surface, and not directly near a heat source.

Product warranty is only valid if installed as described in the installation manual. For up-to-date product information, please visit documents.dometic.com, or contact your Dometic Hospitality sales representative.

1. The minibar must be placed on a surface that is level in both directions.
2. Ventilation must be provided in a chimney-like flow of air as shown in the drawings A, B, C, or D.
3. The entire cooling unit should protrude into the ventilation duct as shown below.
4. Air passing through the duct must not be warmed up by any source of heat.
5. Ventilation grills, if used, must have a free opening for incoming and outgoing air as shown below.
6. The air inlet should be positioned below the unit and the air outlet above, as shown below, with neither placed on the sides. Side ventilation must be avoided in all cases.





#	HIPRO NTE	HIPRO ABS AND COMP	DM50 NTE	DM20 & DM50 C	RH
1 (Air inlet)	$\geq 31 \text{ in}^2 / \geq 200 \text{ cm}^2$	$\geq 24 \text{ in}^2 / \geq 150 \text{ cm}^2$	$\geq 62 \text{ in}^2 / \geq 400 \text{ cm}^2$	$\geq 31 \text{ in}^2 / \geq 200 \text{ cm}^2$	$\geq 31 \text{ in}^2 / \geq 200 \text{ cm}^2$
2 (Back, sides, top)	$\geq 0.59 - 1.57 \text{ in}^* / \geq 15 - 40 \text{ mm}^*$ $0.08 \text{ in}^{**} / 2 \text{ mm}^{**}$ $0.11 \text{ in}^{***} / 3 \text{ mm}^{***}$		$\geq 0.6 \text{ in}^* / \geq 15 \text{ mm}^*$	Approx. $0.4 \text{ in}^* / 10 \text{ mm}^*$	$\geq 1 \text{ in}^* / \geq 20 \text{ mm}^*$
3 (Air outlet)	$\geq 31 \text{ in}^2 / \geq 200 \text{ cm}^2$	$\geq 31 \text{ in}^2 / \geq 200 \text{ cm}^2$	$\geq 62 \text{ in}^2 / \geq 400 \text{ cm}^2$	$\geq 31 \text{ in}^2 / \geq 200 \text{ cm}^2$	$\geq 31 \text{ in}^2 / \geq 200 \text{ cm}^2$

*Between the minibar's back (incl. the cooling unit) and the surrounding structure.

**Between the minibar's sides and the surrounding structure.

***Between the minibar's top surface and the surrounding structure.

Important note

Please read these instructions carefully and follow all instructions, guidelines, and warnings included in all our product manuals in order to ensure that you install, use, and maintain our products properly at all times.

By using our products, you hereby confirm that you have read all instructions, guidelines, and warnings carefully and that you understand and agree to abide by the terms and conditions as set forth herein. You agree to use our products only for the intended purpose and application and in accordance with the instructions, guidelines, and warnings as set forth in the product manuals as well as in accordance with all applicable laws and regulations. A failure to read and follow the instructions and warnings set forth herein may result in an injury to yourself and others, damage to your product or damage to other property in the vicinity. Our product manuals, including the instructions, guidelines, and warnings, and related documentation, may be subject to changes and updates. For up-to-date product information, please visit dometic.com.