



arc  
ADVANCED RESONANT CHARGER

4	arc-H LD
8	arc80
12	arc-G
16	pixelARC
18	grommetARC
19	pabloARC
20	pandorARC
23	TUF USB

OE's versatile wireless charging range includes powerful, easy to install, solutions that allow users to charge their devices while they eat, drink or work. No need for wires, simply place your phone on the charger for a quick boost. All our charging solutions are robust and easy to clean, perfect for cafes, offices, bars and hotels.





# arc-H LD

The arc-H LD through surface wireless charger offers the ultimate convenience in charging. Designed with a charging range of 20-50mm\*, arc-H LD can be installed without the need to cut into work surfaces.

\*20-30mm to comply with FCC Part 15

\*Surfaces thicker than 25mm require OE's electronic alignment tool



# arc-H LD

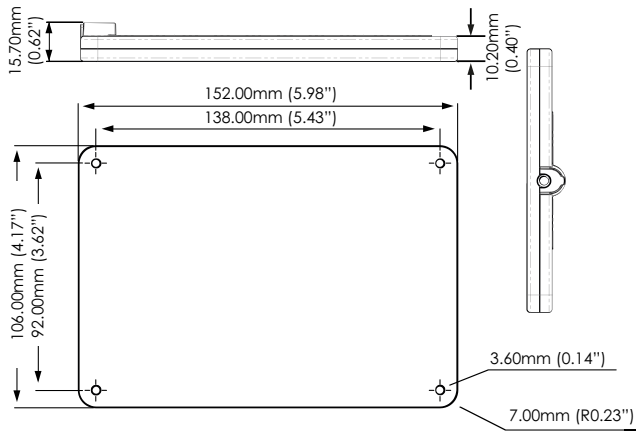
Providing 10 Watts of charging power arc-H LD is among the fastest wireless chargers on the market! Keeping in mind it's also a through surface charger! arc-H LD is great for a quick boost, or a full charge when you need to get some work done.



For arc-H LD's full technical information please visit the link below:

[www.oeelectronics.co.uk/2020/11/arc-h-ld-sub-surface-charger-wireless/](http://www.oeelectronics.co.uk/2020/11/arc-h-ld-sub-surface-charger-wireless/)

arc-H LD Dimensions



arc-H LD 20-50mm specifications

Output power:	Up to 10W
Input power:	19V/0.94A
Standby power:	0.2 W
Charging Z-Distance:	20-50mm surface thickness
Desk Thickness:	No under-desk routing for surfaces 20-50mm. Surfaces 30mm+ require under-desk routing to comply with FCC requirements.
Certification:	Qi Compatible, FCC Part 15, IEC 60950-1 (Safety), EN62311 (Health), EN 301 489-1, EN 301 489-3 (EMC), EN 303 417 (Radio)
Available colors:	Resonator Pad and the arc-H (LD) body are RAL 7012 Basalt grey
In the box:	1x arc-H (LD), 1 x Power adaptor with (1.5m) lead and NEMA, UK, Euro 2 pin, and Australian/Chinese plugs 1 x Resonator pad (110mm), 1 x Alignment Magnet, 1 x Alignment Template, 3 x Cable Clips, 1 x Installation Manual

arc-H LD

arc-H LD can be installed on surfaces 20-50mm thick, negating the need to cut into the underside of the surface for most standard installations.



# arc80

Lose those annoying cables and get charging with arc80.

Simply rest your wireless compatible device on our wireless charger for a fast convenient charge.

For arc80's full technical information please visit the link below:

[www.oeelectronics.co.uk/2019/06/arc80-wireless-charger/](http://www.oeelectronics.co.uk/2019/06/arc80-wireless-charger/)

# arc80

arc80 offers the latest generation in wireless charging, providing a clutter-free and convenient way to charge your phone. arc80 is specifically designed to work with both Samsung 10W and Apple 7.5W charging modes in addition to the standard 5W charge.

Available in white or black, arc80 uses the most advanced wireless charging technology to charge your phone without the need for cables.



# arc80

arc80 fits neatly into a standard 80mm hole, and once connected, provides instant wireless charging.

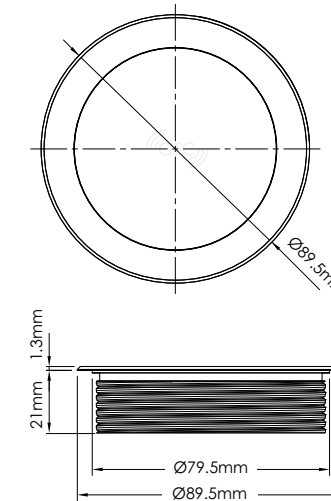
Beautiful and robust cast aluminium finish

10W Wireless Charger

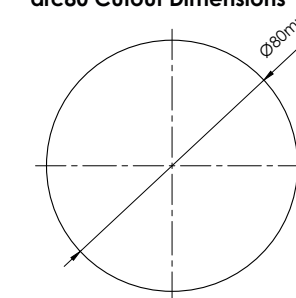
Universal micro USB input

Reversible screw up clamp for maximum thicknesses with anti-theft features

## arc80 Dimensions

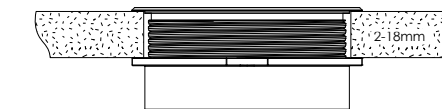


## arc80 Cutout Dimensions



## arc80 Fitting

A) For thin surfaces

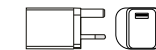


B) For thick surfaces



## arc80 specifications

Output power:	10 W (DC5V 1A / 9V 1.1A)
Input power:	15 W Max (DC5V 2A / 9V 1.67A)
Standby power:	0.45 W
Charging Z-Distance:	0-8 mm (coil to coil)
Surface Cutout size:	80 mm
Desk Thickness:	2-35 mm (Reversible fixing collar for 2-18 & 18-35 mm)
Certification:	CE, Qi
Housing Material:	Anodised Aluminium
Available colours:	Black centre with a black anodised aluminium rim. White centre with a silver anodised aluminium rim.
In the box:	arc80 Wireless Charger, Micro USB cable, fixing tool



\*Power adaptor sold separately





# arc-G

arc-G is a flexible 10W wireless charging solution and can be fitted with AC power, USB charging or brush grommet. It can even be retrofitted to your existing pixelTUF to give you the ultimate charging station. Available in black or white, arc-G will fit into 80mm holes and is perfect for charging compatible Apple, Samsung and Huawei phones.

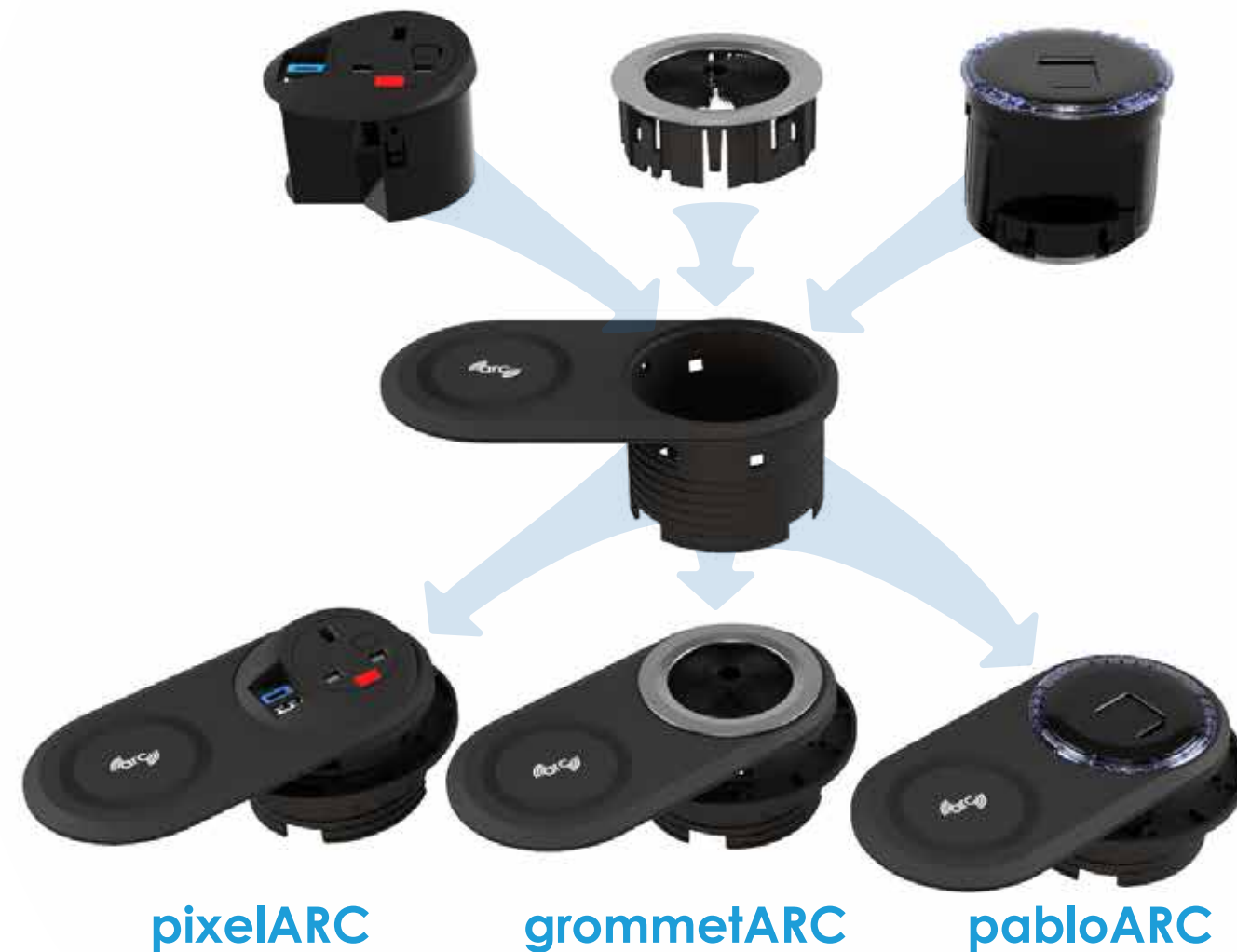


Available in white

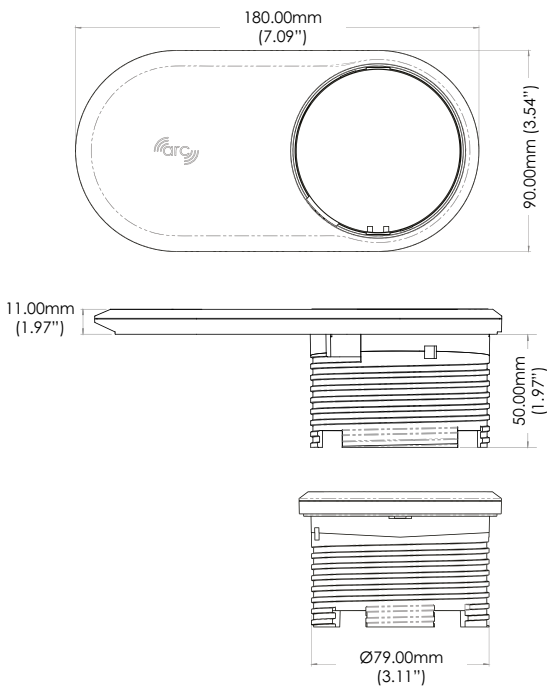


For arc-G's full technical information please visit the link below:

[www.oeelectronics.co.uk/2020/11/arc-g/](http://www.oeelectronics.co.uk/2020/11/arc-g/)



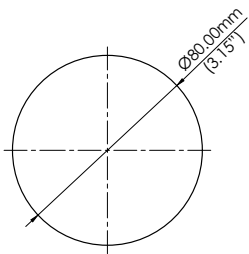
arc-G Dimensions



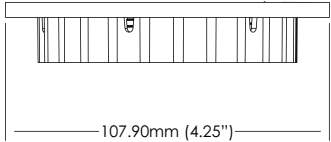
Wireless charger specifications

Output power:	10W Max
Input power:	15W Max (DC5V 2A / 9V 1.67A)
Standby power:	0.45 W
Charging Z-Distance:	0-8mm (coil to coil)
Certification:	EU
Housing Material:	Polycarbonate
Optional power supply:	9V DC QC3.0 Plug top charger with UK, Euro 2P, Nema 1-15 or Australian plug types

Unit Cutout Dimensions



Fixing nut



arc-G





# pixelARC

Fast USB charging for up to two mobile devices is provided via the fully integrated OE TUF A+C 25W Twin USB Fast Charger\* as well as our 10W wireless charger.

pixelARC fits into a standard 80mm grommet hole.

**\*Also available with TUF/HP supplied via QF30 PSU (see page 23)**



# pixelARC

pixelARC presents mains power, 25W USB\* and wireless charging in an ultra-compact form, meeting the growing need for easily accessible charging in informal areas. The installation of this powerful, compact unit is only limited by the imagination. pixelARC is available with international socket options.

**\*Also available with TUF/HP supplied via QF30 PSU (see page 23)**



For pixelARC's full technical information  
please visit the link below:

**[www.oeelectronics.co.uk/2020/11/pixelarc/](http://www.oeelectronics.co.uk/2020/11/pixelarc/)**



# grommetARC

A premium brush strip grommet for installation in an industry-standard 80mm desktop aperture now combined with OE's 10W wireless charger. Moulded in high-strength, fire-retardant polycarbonate with an attractive satin silver painted top, the OE Brush Grommet is held securely in place by the hand tightened locking nut.

For grommetARC's full technical information please visit the link below:

[www.oeelectronics.co.uk/2020/11/grommetarc-in-desk-wireless-charger/](http://www.oeelectronics.co.uk/2020/11/grommetarc-in-desk-wireless-charger/)

# pabloARC

pabloARC is fitted into an 80mm grommet hole and combines fast effective wireless charging with our TUF A+C USB charger\*. pabloARC is available in black or signal white with either silver anodised or gloss black inlay and shutter with a blue decorative ring with optional LED.

\*Also available with TUF/HP supplied via QF30 PSU (see page 23)

For pabloARC's full technical information please visit the link below:

[www.oeelectronics.co.uk/2020/11/pabloarc/](http://www.oeelectronics.co.uk/2020/11/pabloarc/)

# pandorARC

pandorARC gives you three ways to charge your devices; 25W USB charging\*, standard AC power, and 10W Qi-compatible wireless charging - all from one power cable! pandorARC is perfect for installation in meeting tables, hotel conference rooms, and office hubs.

\*Also available with TUF/HP supplied via QF30 PSU (see page 23)



Available in white with grey facias

# pandorARC

pandorARC simply fits into a 128mm+ grommet hole and provides 360° socket access.

pandorARC is available in both black and white with a choice of international sockets.

**+See fitting instructions**



For pandorARC's full technical information please visit the link below:

**[www.oeelectronics.co.uk/2020/11/pandorarc/](http://www.oeelectronics.co.uk/2020/11/pandorarc/)**

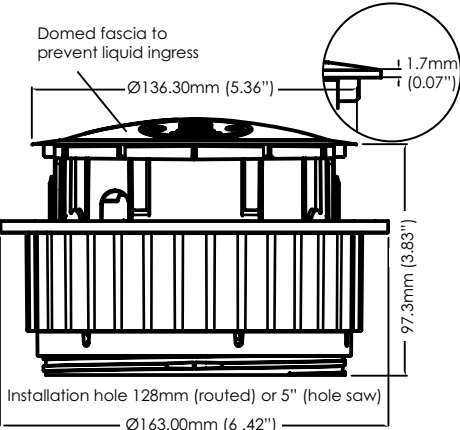


pandorARC features

Configuration:	2 x OE 42mm range AC socket 1 x OE TUF A+C 25W USB Charger or 1 x OE TUF/HP USB Charger* 1 x ARC 10W Wireless charging module
Construction:	High strength fire retardant polycarbonate
Colours:	All black or white with white sockets (UK) or grey AC sockets (other types)
Fusing:	To enable compliance to BS6396 UK sockets are fitted with 5x20mm anti-surge ceramic fuses with colour coded fuse clips to denote the rating (3.15A/5A)
Power cord options:	Either hardwired to mains AC plug to match AC socket type, or male wieland GST18 connector for connection to an under desk module or to a mains supply socket via an OE starter cable

\*Requires QF30 Power Supply Unit

pandorARC with ‘inclined’ grommet



Wireless charger specifications

Output power:	10W Max
Input power:	15W Max (DC5V 2A / 9V 1.67A)
Standby power:	0.45 W
Charging Z-Distance:	0-8mm (coil to coil)
Certification:	EU
Housing Material:	Polycarbonate
Optional power supply:	9V DC QC3.0 Plug top charger with UK, Euro 2P, Nema 1-15 or Australian plug types



TUF 25W USB charger specifications

USB Charging Outlets:	1 x Type A Female (Reversible) 1 x Type C Female (Reversible)
Charging current:	Type C : 5V/3A, 9V/2.22A, 15V/1.65A, 20V/1.2A, (PD3.0) Type A: 5V/3A, 9V/2A, 12V/1.5A (QC3.0/QC2.0) Combined A+C : 5V/4.0A (max)
Rated total output:	25W
AC Voltage Range:	100-240VAC at 50/60Hz
AC Input Current (Full Load):	Maximum 0.6A
Efficiency:	Up to 90%
Environment:	0-25°C
Standby Power:	0.05W
Field Replaceable:	Yes when in 42mm Canister

TUF/HP USB charger specifications

USB Charging Outlets:	1 x Type A Female (Reversible) 1 x Type C Female (Reversible)
Power In Connector:	Male GST08 DC connector
Rated total output:	72W Max
Output Voltages & Currents:	Type C : Max 60W 20V/3A, 15V/3A, 9V/3A, 5V/3A (PD3.0) 3.3 11.0V / 3.2A (PD PPS Mode) QC 2/3.0 5V/3A, 9V/2A, 12V/1.5A Type A : MAX 12W 5V / 2.4A IDR BC1.2, Apple 12W Mode Samsung Fast Charge
Input Voltage:	24-30V DC
USB Connector Min Insertions:	Type A - 10,000, Type C - 10,000
Over Current Protection:	Yes, Digital Control at 3.3A - Auto reset with LED Flash
Short Circuit Protection:	Yes, Digital Control at 3.3A - Auto reset
Over Temperature Protection:	Auto Power Reduction to PD 45W mode. 20V/2.25A, 15V/3A, 9V/3A, 5V/3A
Rated Operating Temp:	0-25°C
Certifications - Safety:	IEC 62368-1 : 2018
Certifications - EMC:	EN61204 : 2018 , EN50121-3-2 (railway), FCC part 15 (B)
Certifications ROHS:	EU 2015/863
Field Replaceable:	Yes when in 42mm Canister and QF5 solutions

TUF/HP requires connection to QF30 PSU to allow delivery of high power USB charging.

QF30 PSU specifications

Input Connectors:	1x Male mains GST18i3 Input 20A installation coupler
Output Connectors:	1x Female Mains GST18i3 output 20A installation coupler 1x Female 30V DC GST08 output
Input Voltage:	100-230 VAC 50-60Hz, 100-110 VDC
Rated Input Current:	1.7A
AC through current rating:	20A
Output Power:	70W Max
Output Voltage:	30V DC
Output Current Rated:	2.34A
Standby Power:	0.21W
Efficiency:	92% Max
Over Current Protection:	Yes
Short Circuit Protection:	Yes
Over Temperature Protection:	Yes
Status Indication:	Yes Blue LED - power on
Certifications:	UL/IEC 62368-1 : 2018 (safety), EN61204 : 2018 (EMC), EN 50121-3-2 (railway), FCC Part 15 (B), Ecodesign Directive 2009/125/EC

# Contact Us

## Sales

email

**+44 (0) 1924 367255**

[sales@oeelectrics.co.uk](mailto:sales@oeelectrics.co.uk)

## Quotes

email

**+44 (0) 1924 334014**

[quotes@oeelectrics.co.uk](mailto:quotes@oeelectrics.co.uk)

## Website

**[www.oeelectrics.com](http://www.oeelectrics.com)**

## Address

(head office)

OE House, Thomas Maddison Lane,  
Calder Park, Wakefield,  
West Yorkshire, WF4 3GH

## Overseas

### Manufacturing

### Sales Offices

#### OE Elsafe

tel: +61 (0) 2 9454 7515  
email: [sales@oeelsafe.com.au](mailto:sales@oeelsafe.com.au)  
[www.oeelsafe.com.au](http://www.oeelsafe.com.au)

#### London

tel: + 44 (0) 20 72539738  
email: [london@oeelectrics.co.uk](mailto:london@oeelectrics.co.uk)  
1a Briset Street, London, EC1M 5NR

#### Europe + rest of world

tel: + 49 175 689 7227  
email: [global@oeelectrics.co.uk](mailto:global@oeelectrics.co.uk)

#### OE Electrics GmbH

tel: +49 (0)2261 958 3001  
email: [info@oeelectrics.de](mailto:info@oeelectrics.de)  
[www.oeelectrics.de](http://www.oeelectrics.de)

#### Middle East

tel: + 971 (0) 50 145 7695  
email:  
[info.middle-east@oeelectrics.co.uk](mailto:info.middle-east@oeelectrics.co.uk)

#### OE Inc

tel: 1-(844) 927 0600 toll free  
email: [sales@oeelectrics.com](mailto:sales@oeelectrics.com)  
[www.oeelectrics.com](http://www.oeelectrics.com)

**oeelectrics**  
always innovating