

solus

FIRE AND WATER



Contemporary Design, Crafted in Concrete.
Built to Last.

Add style and substance to any outdoor space with one of our beautiful concrete fire pits, firetables and water features. Our attention to quality and detail will bring a unique sophistication to your outdoor living.

WE SHIP WORLDWIDE

solusdecor.com info@solusdecor.com 1-877-255-3146 Vancouver, Canada
solusdecor.co.uk info@solusdecor.co.uk 0208 819 1495 London, England

Henk Veldhuis | Vancouver, Canada (2014)

We have had a Solus fire pit for the past 5 years at our previous home. We now purchased two fire pits for our new home we recently built. Their fire pits are of the highest quality, look cool and function like no other !

Michael Johns | Edmonton, Canada (2018)

I purchased a natural gas hemi 36 back in 2014, and my family has been using it regularly for the past four years. There's a lot to like about this product and this company. To begin with, our sales and delivery experience was first-rate. I was a little hesitant about having a heavy concrete product shipped from Vancouver to Edmonton, but I needn't have worried. Our fire bowl arrived very well packed and crated. Moving the fire bowl into our back yard was easy using the supplied lifting straps, but does require two people. Once installed over the gas line we had run for this purpose, the fire bowl looked stunning--sleek and modern and an instant focal point. We also purchased the hardwood tabletop and all-weather cover, and after living with them for four years, I can recommend both. The tabletop has proven very useful for those times when we're sitting outside with food and beverages, but have no intention of lighting the fire bowl. The all-weather cover, at least the one we have, has worn like iron. After four Edmonton winters, it's still in remarkably good shape. The fire bowl itself has exceeded our expectations; it's easy to light, looks wonderful in operation, and makes sitting in our back yard on a summer's evening that much more special. We have never regretted our purchase, and we have never hesitated to recommend Solus Decor to the many people who have complemented our fire bowl.

Ros Hetreed | Kent, England (2018)

Our Solus Dome water feature, found at the Chelsea Flower Show and now positioned on the rear terrace, has a wonderful tinkling echo and can be heard across the entire length of the house when the double bifold doors are open, also in the bedrooms above. Its simple but tasteful design could fit anywhere, inside or out. We are delighted with it.

Kaye Banda | Austin, Texas (2014)

Our fire pit is the coolest design in Austin, Texas. It is the show stopper on our new deck. It is the place on our deck our friends want to hang out for the evening.

**Nick Hamad, Landscape Architect-Land Expressions LLC |
Spokane, Washington USA (2014)**

Both your fire table and service are of excellent quality and surpass our client's exacting expectations. As Landscape Architects, we are quite impressed with the quality of the material we received from Solus. The concrete work on the HALO fire table we received was excellent, the product arrived timely and in perfect shape. We are confident specifying Solus' product and will continue to do so for many projects in the future.



Edward Bash, Dalmatia Landscape Design | USA (2014)

What is it about the Canadians, so friendly and relaxed, but able to deliver on craftsmanship and customer satisfaction. I have ordered fire bowls for clients on two projects. The web site is great because I am able to show clients photos and spec sheets at meetings. Staff is friendly and easy to talk to, but take care of business as well. I am very happy with quality and service.

Toby Warren | Kent, UK (2017)

With items like this I always try to buy the best products I can afford so they will last. My Solus fire bowl was expensive but it will look good year after year and is the centerpiece of my garden design.

Our Fire & Water Features

At Solus, we make beautiful and long-lasting objects that run counter to a culture obsessed with trends and disposability; much like concrete itself.

We design, build, and source all components for Solus products from our Vancouver, Canada facility and utilize local producers whenever possible. This allows us to keep the quality high and make improvements rapidly.

All our products are commercial grade and fully certified for North America and Europe (ANSI/CSA/CE). Fire authorities, municipalities, insurers and homeowners can rest assured that our products are safe and built for purpose.

We utilize a 'cross-jet' burner system which produces a flame above the lava bed so no heat is lost into the vessel. The concrete itself never gets hot, making our fire features perfect for residential and commercial installations.

Our self circulating water bowls are simplicity personified and complementary to our firepits. Simple plug and play waterdomes which can be used in interior and exterior designs.

Hemi (26, 36 & 48)



Kathleen Sullivan | Colorado, USA (2018)

I purchased the Hemi 36 fire pit for my deck and it is absolutely beautiful. Solus was great to work with during the entire process and always available to answer questions and provide samples. I would highly recommend this fire pit!

Kathryn van Rooyen | Majorca, Spain (2018)

My Hemi fire pit from Solus Decor is simply beautiful. The product is even better in life than the pictures and so simple to install. The directions and videos provided are excellent and it looks stunning on my terrace. The team could not have been more helpful or efficient they were great. Not to mention patient with my many questions! I highly recommend them.

Len Chaston | Vancouver, Canada (2014)

The best in the business. We purchased the 36" Hemi. Love it. Beautifully built. Works like a charm. Simple beauty. Timeless.

Refined sculptural presence

Available in three sizes to suit any space. These round fire bowls add heat, ambience, simple sculptural beauty, and an architectural statement. Our 'cross-jet' and ethanol burners provide ample flames and are built to last. Three fuel types with manual or electronic start options allow these bowls to be used in all outdoor situations. Each fire bowl is available in 10 colours and can be paired with a full bed of Firestones, a Concrete Fire Ring, a Hardwood Tabletop, a Metal Tabletop/Fire Ring, or an All-Weather Fabric Cover for added beauty and functionality.

The Hemi 26 is ideal for intimate outdoor spaces. It comes with a plinth for additional height customization.

Hemi 36 creates an instant gathering place. Its form shows off the natural beauty of our concrete and provides a focus for residential and commercial environments.

Hemi 48 is our largest round fire pit. It commands attention and its presence fills any space. Designed in response to repeated requests for a fire pit that would be comfortable in both large scale commercial and intimate residential spaces, the 48" makes a strong visual statement.

Product variations & dimensions

Sizes: (dia.) x (h) x (base)

26" x 12" x 10" (660mm x 305mm x 254mm)

26" with plinth

26" x 16.75" x 11.40" (660mm x 426mm x 292mm)

36" x 17" x 12" (914mm x 432mm x 305mm)

48" x 23" x 17" (1219mm x 584mm x 432mm)

Fuel Options: **Output in BTU's (kW):**

Ethanol 18,000 (26") or 60,000(36") (6 or 18kW)

Propane 73,500 or 60,000 (*drink ring*) (22 or 18kW)

Natural Gas 73,500 or 60,000 (*drink ring*) (22 or 18kW)

(For 48 hemi only) High Output (NG only) 108,000 (34kW)

Ignition Mechanism: (NG/LPG)

Match-lit (NA only)

Match-lit with flame supervision device (NA + Europe)

Electric Start w/ set flame (NA only)

Electric Start w/ adjustable flame with a safety shut off
(NA + Europe)

Accessories:

Matching Concrete Ring

Metal Tabletop with Ring

Hardwood Tabletop

All-Weather Fabric Cover

Additional Firestones

Glass Shield (special order)

Colour:

Your choice of 10 different colours

Certification:

ANSI/CSA & CE certification on the entire product; burner, electronics & vessel (NG + LPG)

Warranty:

Extend our warranty by purchasing an All-Weather Cover or Metal Tabletop. See page 21 for details.



Complete HEMI fire feature showing adjustable flame key



All-Weather Cover (option)



Matching Concrete Ring (optional)



Hardwood Tabletop (optional)



Anodized Metal Tabletop with Fire Ring (optional)



Anodized Fire Ring (comes with Tabletop - optional)

Halo (Low & Elevated 36 & 48)



Pratima Anae | California, USA (2018)

I bought the Halo Low fire pit from Solus. It's beautiful and I couldn't be happier with it. We live in Los Angeles and purchased a mid century modern home. I took the last 7 years to restore it. The fire pit was one of the first items I purchased. I actually got a year before I needed. I just saw it and knew that it was the one for me. They have great sleek designs in a variety of finishes. It was unlike anything on the market. Customer Service was also excellent. We highly recommend this company.

Mandy and Dave | Canada (2016)

I bought a bio ethanol Elevated Halo 36 Firepit in Linen from Solus Decor as part of my garden re design. We love it - it's easy to light, clean, gives a good flame and a substantial amount of warmth. It was easy to order and the delivery guy was very helpful. Overall the product is great quality, good looking and does the job!

Square sensuality

Crisp outer edges that curve smoothly into a round fire opening gives a modern sculptural feel. The Halo shows off the striking and subtle qualities of our concrete. This allows the flickering flame to reflect off its polished surface, inviting people to gather around.

The low version has a deep recessed base that creates a hovering effect, giving a dramatic visual lightness. A very chic and contemporary option.

The elevated versions rest on a square base to give them table height warmth and functionality. This works well when used in conjunction with standard seating.

This style is available in 2 sizes (36 & 48) for large or small spaces and is suitable for residential and commercial installations.

An All Metal Tabletop is available which allows the firepit to be a fully functioning table when unlit. A tented All-Weather Cover is also available.

Product variations & dimensions

Sizes: (l) x (w) x (h)
36" x 36" x 8" (914mm x 914mm x 200mm) Low versions
48" x 48" x 8" (1214mm x 1214mm x 200mm)

36" x 36" x 17" (914mm x 914mm x 432mm) Elevated versions
48" x 48" x 17" (1214mm x 1214mm x 432mm)

Fuel Options:	Output in BTU's:
Ethanol	60,000 (18kW)
Natural Gas	60,000 (18kW)
Propane	60,000 (18kW)

Ignition Mechanism:	Version:
Match-lit (NA only)	Low and Elevated

Match-lit with flame supervision
(NA + Europe)

Electric Start w/ set flame (NA only)	Elevated only
--	---------------

Electric Start w/ adjustable flame* (NA + Europe)	Elevated only
--	---------------

Accessories:
All-Weather Fabric Cover
Additional Firestones
All Metal Tabletop

Colour:
Your choice of 10 different colours

Certification:
ANSI/CSA & CE certification on the *whole* product; burner, electronics & vessel (NG + LPG)

Warranty:
Extend our warranty by purchasing an All-Weather Cover or Metal Tabletop. See page 21 for details.



Large 48" HALO ELEVATED version



36" HALO LOW version (match-lit option only)



All Metal Tabletop



Liquid Ethanol burner (option)



Tented All-Weather Cover

Firebox & Firecube



Jon R Bailie | Chichester, England (2016)

We bought a Solus Fire Cube earlier this year. It's a beautiful looking product, it's very easy to set up and to use and it's been an effective source of heat when we have been sitting in our garden in the evening. The people at Solus kept us informed as to when our Fire Cube was going to be delivered and also followed up with us after delivery to ensure that we were happy with it. All in all, great client service.

Lin Heppner, ART & Commerce Design | Vancouver, Canada (2017)

The quality of Solus products is outstanding and the workmanship is very refined. My client was very pleased with their firebox and the quick turn around from order placement to delivery. The staff members that I dealt with were very helpful, pleasant and professional. Kris Roath was particularly lovely to work with, always on top of what needed to be done.

Square minimalism

The Firebox and Firecube are simple, adaptable fire pits with minimal detailing and a clean, structured presence. Their neat and quiet aesthetics emphasize their content around thin, smooth, concrete walls. Fill the Firebox with a full set of Firestones to give an elegant look and add a Hardwood Tabletop to extend functionality.

The Firecube is ideal if you require a lot of heat in an intimate space. They pack a punch at 40,000 BTU's. A concrete top is included making it a small table when not in use.

Tank Table is designed to hold (and hide) a 20lb. propane tank (only available in North America). Makes a useful side table and can be used in conjunction with any Solus LPG fire pit. We coat the top surface for improved stain resistance.

Product variations & dimensions

Firebox

Sizes: (l) x (w) x (h)

30" x 30" x 15" (762mm x 762mm x 381mm)

Fuel Options:

Natural Gas

Propane

Output:

73,500 (21kW)

73,500 (21kW)

Ignition Mechanisms:

Match-lit (NA only)

Match-lit with flame supervision device (NA + Europe)

Electric Start w/ set flame (NA only)

Electric Start w/ adjustable flame + safety shut off (NA + Europe)

Accessories:

Hardwood Tabletop

All-Weather Fabric Cover

Additional Firestones

Colours:

Your choice of 10 different colours

Certifications:

ANSI/CSA & CE certification on the whole product; burner, electronics & vessel (NG + LPG)

Warranty:

Extend our warranty by purchasing an All-Weather Cover.

See page 21 for details.

Firecube

Sizes: (l) x (w) x (h)

16" x 16" x 17" (406mm x 406 mm x 432mm)

Fuel Options:

Ethanol

Natural Gas

Propane

Output:

18,000 (6kW)

60,000 (18kW)

60,000 (18kW)

Ignition Mechanism:

Match-lit

Accessories:

Tank Table (NA only - LPG)

Colours :

Your choice of 10 different colours

Certifications:

ANSI/CSA & CE certification on the whole product; burner, electronics & vessel (NG + LPG)



Extra 'river rock' Firestones to fill Firebox



Hardwood Tabletop

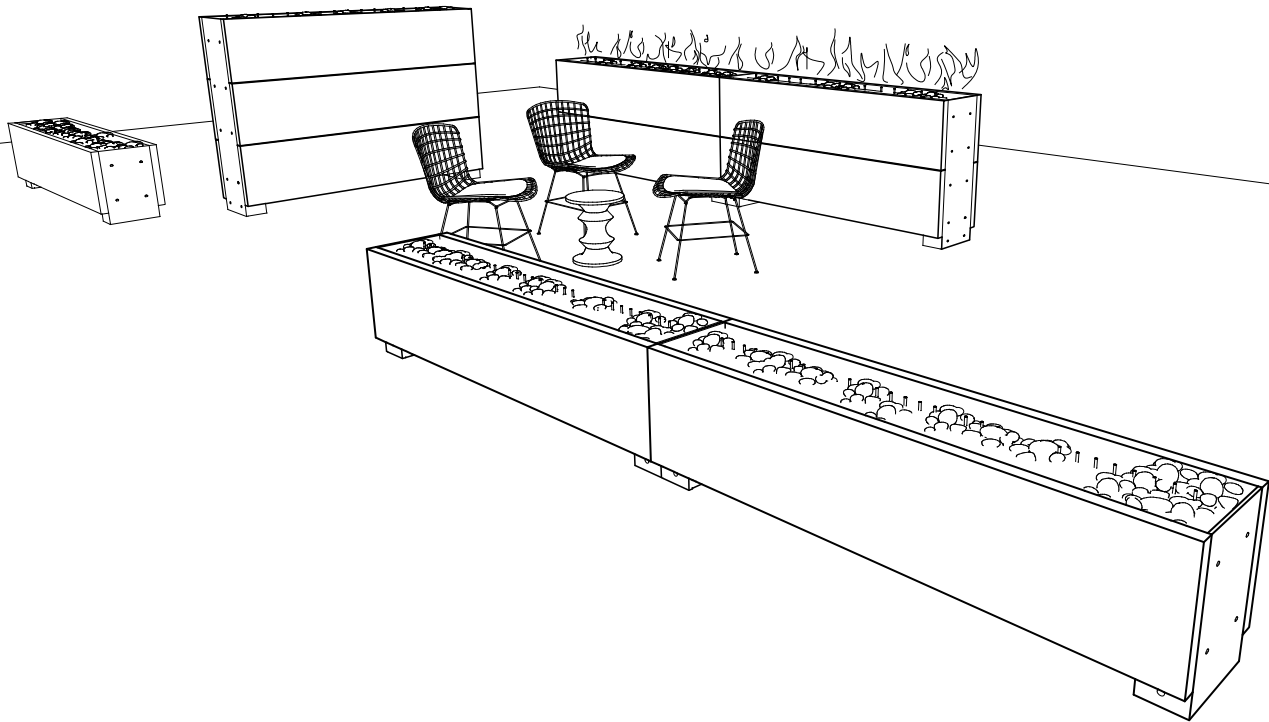


Tank Table option hides a 20 lb propane tank (North America only)



Firecube is ideal for tight spaces.

Linear (Single, Double)



Dramatic Divider

The Solus Decor Linear Firepit is a colossal 6ft wall of fire, designed for heat and visual impact. Its minimal form is complemented by the smooth pebble detail on top that allows the product to traverse the line between being a functional garden product and work of art, fit for admiration.

This firepit can be used as single height or stacked for double height; either configuration will create a powerful impression. The double-height Linear can create semi-private areas, or act as a dramatic divider between areas for drinking and dining.

The Linear Fire Pit can hold its own as the focal point of a patio or courtyard, or can draw you into an entrance or walkway. It is perfect for providing warmth and atmosphere at a garden party; yet due to its slim line form, this fire feature will not take up valuable seating space. It is unmistakably Solus.

These huge linear units dispense double the heat of Solus Decor's other firepits (108,000 btus or 32 kW), making them ideal for use in a high-end residence, as the feature fire that separates the deck from the pool, or placed at the end of a pool for heat for visual impact. In a commercial location, they could be used as an elaborate partition, to create separate zones within an outdoor terrace.

The Linear is available in ten different colourways, and fuel sources include either natural gas or liquid propane (bottled). At 108,000 btus, or 32 kW, it is a significant heater which can be adjusted for heat and flame height. It's available with either manual ignition with flame supervision device or electronic adjustable automatic ignition.

The Linear, like all Solus products, is made in Vancouver, Canada and shipped all over the world.

Product variations & dimensions

Linear

Sizes: (l) x (w) x (h)

single stack 72" x 15" x 19" (1183mm x 381mm x 483mm)

double stack 72" x 15" x 35" (1183mm x 381mm x 889mm)

Fuel Options:

Natural Gas

Propane

Output:

108,000 (32kW)

108,000 (32kW)

Ignition Mechanisms:

Match-lit with flame supervision (NA + Europe)

Electric Start w/ adjustable flame + safety shut off

(NA + Europe)

Accessories:

All-Weather Fabric Cover

Full 'river rock' coverage is extra (shown)

Glass guards (available soon)

Colours:

Your choice of 10 different concrete colours

Certifications:

ANSI/CSA & CE certification on the whole product; burner, electronics & vessel (NG + LPG)

Warranty:

Extend our warranty by purchasing an All-Weather Cover.

See page 21 for details.



Modular units can be stacked & lined up. This double-high is 35" high x 72" long (889mm x 1183mm)



Fully adjustable footing allows for easy leveling



Anodized aluminum end plates = no maintenance



Single-high unit is 72" long x 19" high x 15" wide



Concrete, aluminum and long proportions create a very contemporary feel

Firetable



Maggie Schneider | North Vancouver, Canada (2018)

We have been looking for a firetable for a while but found that many did not produce enough heat. The townhouse where we live has a Solus fire pit on the rooftop so we thought we would give it a try. It is a costly fire bowl but well worth the quality and durability, I as I believe it will last for many years. We have seen many at the local barbecue and hardware stores but nothing compares to the quality of the Solus bowl. We were also very impressed with the customer service, Graham was always quick to respond with any questions and provided us a few quotes in order to provide us with the best option for us. Shipping was also very communicative and willing to work around my schedule in order for us to receive the product. I was very please with the whole experience and I'm now enjoying the beautiful fire bowl. It is certainly attracting a lot of neighbors attention!

A clean and modern fire table

A modern concrete fire pit that is sturdy, functional and at coffee table height. The simple, smooth concrete top is made up of four sections that slope towards the fire opening and reflect the flame light. The sensual top sits above a rectangular concrete box that houses the working parts of this firepit. This combination creates a fire feature that works in a contemporary or traditional garden setting.

Placed alone or in pairs end to end, the clean lines and straight forward design of these fire tables makes them at home in a variety of environments from spare modern to rustic traditional. Appropriate for use in commercial and residential projects. All of our natural gas and propane fire pits are fully certified appliances and each one comes with a warranty on craftsmanship and performance.

Our cross jet burners position the flame above the fire pit which results in more efficient use of fuel and transference of heat. The jets are oriented for efficiency and maximum flame height. Fire stones can be used to shape the fire for a more 'natural' look. Manual and adjustable auto start options allow you to adjust the flame height and heat output to suit your needs.

Product variations & dimensions

Firetable

Sizes: (l) x (w) x (h)

51" x 27" x 19-1/2" (1295mm x 686mm x 483mm)

Fuel Options:

Ethanol

Natural Gas

Propane

Output:

60,000 (18kW)

73,500 (22kW)

73,500 (22kW)

Ignition Mechanisms:

Match-lit (NA only)

Matchi-lit with flame supervision (NA + Europe)

Electric Start w/ set flame (NA only)

Electric Start w/ adjustable flame + safety shut off
(NA + Europe)

Accessories:

All-Weather Fabric Cover

Colours:

Your choice of 10 different colours

Certifications:

ANSI/CSA & CE certification on the whole product; burner, electronics & vessel (NG + LPG)

Warranty:

Extend our warranty by purchasing an All-Weather Cover.
See page 21 for details.

Jeffrey Hanratty, Versailles Building & Design | Burnaby, Canada (2014)

5 Star service well deserved rating. We have had an excellent service experience with Solus. We had a small issue with the fire table we purchased. Solus was fantastic with dealing and immediately resolving the issue with a smile.

Leonard Karp (2014)

I am very happy with the product and service that was provided regarding my purchase of the firepit.

David Wadors | California, USA (2014)

Great product, well made, love it. Packing was the best I have seen for any product I have ever received, its nice to deal with people who love quality and pay attention to detail.



Firetable overview



Tented All-Weather Fabric Cover



Adjustable flame option available (low flame setting shown)

Dome (26, 36 & 48)



Susan Green | London, England (2018)

We wanted a quality water feature. We found Solus to be extremely professional from start to finish in providing information and helping with sample, to ensure we had the right colour to blend with the rest of our landscaping. Solus provided unprompted updates re delivery and have helped with every piece of information that we have ever requested. Their customer services is second to none. The end result is a beautiful water feature that is a centre piece in our garden, perfect to watch and so lovely to listen to.

Reflective and meditative

These water features have polished metal domes that appear to float inside the concrete vessels. Water flows up through the center of each dome to run over the reflective surface of the hand-spun metal and then drop off the edges into the surrounding water creating sound.

Like our concrete pieces, each metal dome is handmade and unique. The variations, inconsistencies and undulations characteristic of hand-spun metal create the beautiful water movement and reflections that define these water features.

Our concrete bowls provide a solid aesthetic counterpoint to the shine of the domes and the fluidity of the water while functioning as impermeable containers. Every dome is attached to a support which holds it securely inside of it's concrete vessel. Appropriate for use indoors or out for residential and commercial installations.

Product variations & dimensions

Dome

Sizes: (l) x (w) x (h)

26" x 12" x 10" (660mm x 305mm x 254mm)

36" x 17" x 12" (914mm x 432mm x 305mm)

48" x 23" x 17" (1214mm x 584mm x 432mm)

Metal dome types:

Stainless Steel -machine-finish & electro-polished

Brass -coated or uncoated

Pump Systems:

Pontec 3000

Adjustable flow

2 year manufacturers warranty

Accessories:

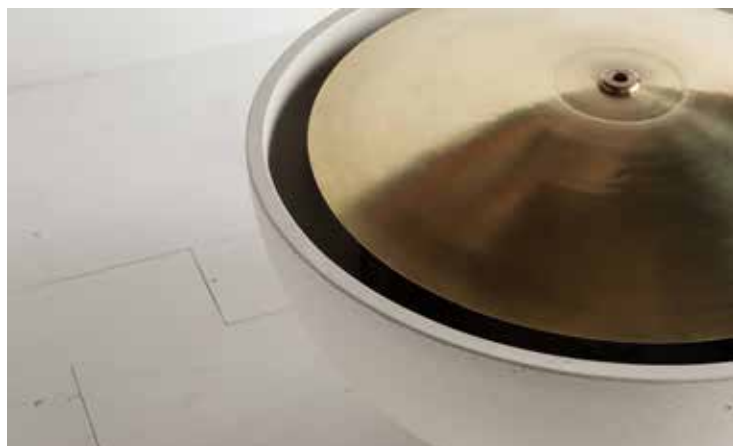
All-Weather Fabric Cover

Colours:

Your choice of 10 different colours



48" Dome in stainless steel



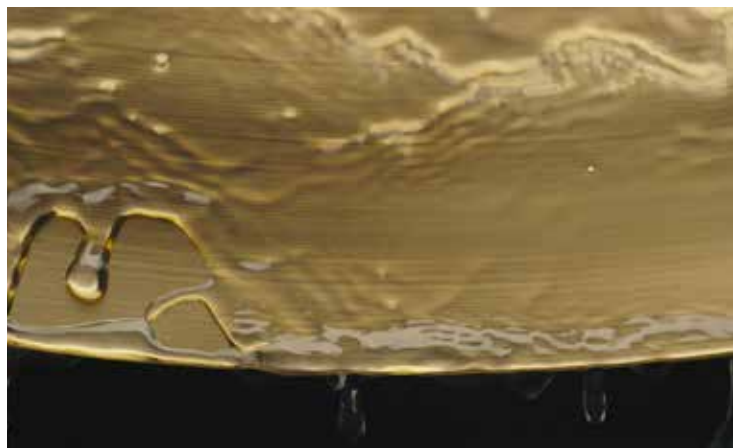
Brass dome with satin machine-finish

Ros Hetreed | Kent, England (2018)

Our Solus Dome water feature, found at the Chelsea Flower Show and now positioned on the rear terrace, has a wonderful tinkling echo and can be heard across the entire length of the house when the double bifold doors are open, also in the bedrooms above. Its simple but tasteful design could fit anywhere, inside or out. We are delighted with it.

Ben Helps, Anna Helps Garden Design | West Sussex, UK (2017)

I have used Solus water features and fire pits in my garden design business for my clients. They are a product of great quality, with a pleasing aesthetic. They can be featured in various styles of well-designed gardens and deserve an appropriate setting and backdrop to show them off to their full potential.



Rippling water refracts light on metal dome

Scupper (26, 36 & 48)



*Falken Reynolds Interiors |
Vancouver, Canada (2016)*

*Solus' products are simply the highest
quality and their service is always
amazing. We are very proud to have
such a great company in Vancouver,
and to use their products here and
abroad.*

Flowing and reflective

A nod to historical architecture and nautical forms the Scupper water bowl combines mechanically formed metal with smooth hand cast concrete. These formal elements are brought to life by the movement and sound of falling water.

Entering from a central opening in the bottom of the concrete bowl, water fills the vessel creating a deep pool that spills out through the reflective channel of the scupper. The polished metal and pooled, cascading water combine to create interesting reflections as light plays over their surfaces.

Available in three sizes these water bowls can be used in a variety of situations including installations with in-ground catch basins and existing ponds. Appropriate for use indoors or out for residential and commercial installations.

Scupper with Basin is a self-contained system for those situations where a 'plug and play' situation is preferred. The 26" bowl version comes with a matching concrete box. The 36" and 48" Scuppers are available with special order custom stainless basins (12-week delivery lead time). The 36" and 48" are generally used in conjunction with pools or large ponds.

Product variations & dimensions

Scupper

Concrete Bowl: (l) x (w) x (h)

26" x 12" x 10" (660mm x 305mm x 254mm)

36" x 17" x 12" (914mm x 432mm x 305mm)

48" x 23" x 17" (1214mm x 584mm x 432mm)

Metal Scupper types:

Stainless Steel

Brass

Pump Systems:

Pontec 3000

2 year manufacturers warranty

or

Clients own mechanical system

Colours:

Your choice of 10 different colours

* All Scuppers can be sold without the basins

Scupper with Basin

Concrete Bowl:

(l) x (w) x (h)

26" x 12" x 10"

(660mm x 305mm x 254mm)

Basin:

(l) x (w) x (h)

36" x 18" x 8" (concrete)

(914mm x 457mm x 203mm)

36" x 17" x 12"

(914mm x 432mm x 305mm)

50" x 25" x 11" (stainless)

(1270mm x 635mm x 279mm)

48" x 23" x 17"

(1214mm x 584mm x 432mm)

69" x 34.5" x 14"

(1750mm x 875mm x 350mm)

Basin types:

Concrete

Stainless steel (by special order)

Pump Systems:

For 26" bowl

Pontec 3000

Accessories:

Pebbles (included)

Colours :

Your choice of 10 different colours



Scupper overview



Brass scupper



Brake formed stainless steel scupper



Scupper with concrete basin is available for 26" only

Artisanal Craftsmanship



Houzz Review (2016)

This is a beautiful and well made product. The burners (the part that fails on cheap fire pits) are solid brass and well made. The size and proportions are ideal for a moderate to larger space. The bowl arrived in a museum standard wooden shipping crate and was well padded to ensure that it was not damaged.

Chris Overall (2013)

Solus were recommended to us for the best open fire pits. Though expensive, they certainly are and we totally love it. The finish on the concrete is like looking at an Apple product... fine finish, exacting tolerances and well made. The packing was perfect to preserve the integrity of the product, the unpacking was easy and the install went without problems.

Only the highest quality parts, material & craftsmanship

Our high-performance concrete is a blend of cement, aggregate, colour, and recycled fly-ash. It is cured for 28 days. It is strong, beautiful and can withstand extreme weather fluctuations. We have been making Solus concrete for over 20 years - built to withstand extreme Canadian climates.

All our burner parts and assemblies are made with stainless steel and aluminum. Even harsh seaside conditions will not corrode the assembly. Our brass burners are the best in the business.

The people that work at Solus are skilled, knowledgeable and understand craftsmanship. Everyone needs to contribute to our success, and they do.

Specifications are available online from our website or search 'Solus Decor' at www.caddetails.com

Concrete Colours - All Products

Halva:

Varies from oyster to bone. Tends to a slight cream tone. Warm white.

Portland:

Natural concrete colour. A mid-tone gray with slight green undertones.

Linen:

Light beige. Warm undertones approach limestone.

Nutmeg:

Dark beige. More brownish than linen. Think walnut shells or whole nutmegs.

Portobello:

A lighter mid tone colour with a light olive undertone. Dark mottling makes this an intriguing colour.

Arbutus:

A rich terra-cotta colour. Very arresting.

Nori:

A pastel-ish green/grey. Makes one think of the sea.

Truffle:

A warm chocolate brown. Can vary from lighter to darker but is a darker tone.

Shiitake:

Very dark-toned grey with a warm brown undertone.

Cinder:

Our darkest charcoal grey with a slight warm undertone.

Please note that colours shown here are only approximate. Every batch of concrete is slightly different and exhibits unique tonal variations.

Please request actual concrete samples to confirm colour choice.

NA call 1-877-255-3146

UK/Europe call 0208 819 1495



Halva



Portland



Linen



Nutmeg



Portobello



Arbutus



Nori



Truffle



Shiitake



Cinder

Shipping



Nicole Walchuk | Langley, Canada (2016)

We received excellent customer service upon visiting the Solus showroom. All of the aesthetic options and the working details were explained and shown to us while there in our one and only visit. Our purchase was then done through email and the pick up date was as stated and packaged extremely well for transport. We are extremely happy with our purchase - Hemi 36 Fire bowl in cinder with extra concrete rocks.

Clare, Briarcliff B&B | Massachusetts, USA (2013)

Martes at Solus Decor was extremely helpful, answering my many questions promptly and informatively. The firebowl itself came in its own crate, and I was able to track it all the way - very impressive. And we love the finished article: beautifully made and a real style statement. Not a cheap purchase, but a real investment and, in my eyes, totally worth it.

Nowhere is too far — We Ship Worldwide

Shipping concrete sounds expensive and difficult, but it's really quite reasonable and easy. We have shipped to residences, hotels, restaurants and job sites in over 35 countries around the world. We pack the products in a custom crate to ensure protection during delivery or for on-site storage. Crates are delivered curbside next to your site where the top and sides can be easily dismantled with a cordless drill. Our delivery success rate is over 99.5%.

Warranty

All Solus products are warranted against manufacturers defects for periods ranging from 1 year to 25 years, depending on product or part. By purchasing (and using) a Solus All-Weather Cover and/or Metal Tabletop, we will extend the warranty period to the maximum available. Please inquire for details.

Sales and Support

Our Sales and Support team are professional and friendly and can answer any questions you may have. So please, give us a call and we can help find the right product for your project.

Warranty

Solus Limited Warranty

Type	Component	No Cover or Metal Tabletop purchased	Solus All-Weather Cover and/or Metal Tabletop purchased
Manual Ignition Fire Features	Brass Burner and components	5 years	25 years
	Concrete Vessels	1 year	5 years
Manual Ignition w/ Flame Supervision Fire Features	Brass Burner and components	5 years	25 years
	Concrete Vessels	1 year	5 years
	Flame Supervision components		
	Auto Shutoff Gas Valve (H15)	1 year	3 years
	Thermocouple (K17)	1 year	3 years
	Universal Pilot (J985)	1 year	3 years
Electronic Ignition Fire Features	Brass Burner and components	5 years	25 years
	Concrete Vessels	1 year	5 years
	Electric components		
	Dual Solenoid Valve (BGD258)	1 year	3 years
	Intermittent Pilot Assembly (J996)	1 year	3 years
	Sensor Assembly (Y75)	1 year	3 years
	Ignition Control (EBC1000)	1 year	3 years
	Spark Wire (WHA40)	1 year	3 years
	Wiring Harness (WHA43)	1 year	3 years

These warranties are limited to the original purchaser for defects in material and workmanship for the stated periods. Solus Decor will, at its election, repair or replace the product where Solus inspection discloses any such defect occurring with normal usage. Solus will replace all warranted parts free of charge. Client is responsible for any costs associated with crating, shipping, handling, re-installation labour or disposal of replaced products or components.

Solus does not provide onsite repair, visits or service.

Prior to shipping, all electronic start burners and burners with Flame Supervision Valves are burn tested by Solus as part of certification.

The purchaser, prior to installation, should inspect the products and report any defects immediately. The Product Registration Form must be completed in full and returned to Solus within 30 days of installation.

This warranty does not cover damage to products caused by inappropriate or improper installation, unauthorized modifications to the burner, vessel, parts, accident, misuse, abuse or improper maintenance; nor coloration and surface texture changes due to exposure to the elements. Please refer to prior pages in this Terms of Business for more details about natural product characteristics that would not be considered under a warranty claim.

Katy Williams | Portland, USA

Our fire pit is the perfect modern, clean look we were looking for. It puts out a lot of heat and the flame stays in the bowl. I love that it is quiet and you do not hear the hiss of the gas when it is on. It is very well made and we get many compliments. I originally thought I would need to hire a contractor to install it, but my husband and I were able to carry it (36 inches) ourselves to put it in place. We just needed to hire the person to run the gas. Pretty easy.

Ian Jenkins | Ireland (2018)

I've both a fire pit and a water feature, really pleased. Super products, great service and really highly recommended.

Leslie McGeough | Canmore, Canada (2013)

We live in Canmore, Alberta, Canada in the beautiful Bow Valley high up in the Rocky Mountains. We wanted a fire pit on our deck that would provide heat, ambience, and decor. We looked for two years before we found the perfect product for us - Solus Decor, Vancouver BC's hand polished concrete fire pits. Stunning design, craftsmanship, and quality. The fire pit has extended our deck season by several months. Solus crated and shipped the firepit, then we used a zoom boom to lift the fire pit to our upper deck. Assembly and installation took 30 minutes. Easy. We use the fire pit almost every evening. The fire pit is worth the money.

Mike Ball | Palm Springs, USA (2014)

Solus is a total pleasure to deal with. We purchased our first firebowl in 2012. We found the quality of the product and the service provided to be excellent. We ordered a second for our winter home in California later that year. It was shipped to us and arrived professionally packed and ready for service. Unfortunately, it was the wrong colour but Solus very quickly shipped us the correct tone at their expense. We have thoroughly enjoyed our firebowls and both have been absolutely trouble free. I have no hesitation in recommending both the company and the product.

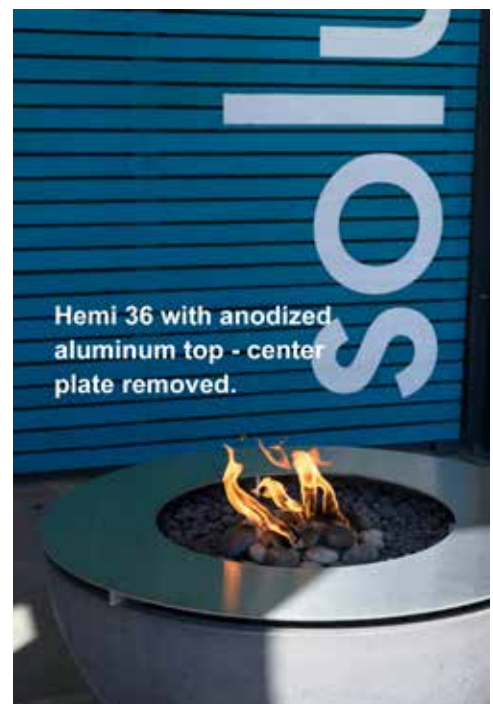
Dave Brown, Contractor | Guildford, UK (2016)

This is a beautiful and well made product. The burners (the part that fails on cheap fire pits) are solid brass and well made. The size and proportions are ideal for a moderate to larger space. The bowl arrived in a museum standard wooden shipping crate and was well padded to ensure that it was undamaged.

WE ARE SOLUS



solus



At Solus we design, build, test, certify, sell, service and warranty our products
We are proud of our products and what we do
We are Solus



solus

WE SHIP WORLDWIDE

NORTH AMERICA

109 Braid Street
Building C
New Westminster, B.C.
V3L 5H4

Toll Free 1-877-255-3146
Local 604-255-2472
Web solusdecor.com
Email info@solusdecor.com

Vancouver showroom
Monday-Friday 9-5
except Statutory Holidays
Saturday & Sunday-closed

UK and EUROPE

Wimbletech CIC, Wimbledon RL
Wimbledon Hill Road
London
SW19 7NB

Local 0208 819 1495
Web solusdecor.co.uk
Email info@solusdecor.co.uk

No showroom at this location
Call for display locations