



HIGH-END GAMING TABLES AND CUSTOM FURNITURE

www.ElevateCustoms.com



ABOUT
ELEVATE CUSTOMS

At Elevate Customs, we provide residential buyers, corporate clients, and coveted designers with contemporary custom-built game tables that offer a unique blend of sophisticated style and immeasurable function. Our unwavering commitment to quality and design has attracted an elite group of dedicated master craftsmen who impress our clients with not just gaming tables, but unique works of art that include a crucial gaming element—superior playability. Whether it's a timeless game such as a table tennis, pool, shuffle board, foosball, or poker, or a customizable design that offers day-to-day function as both a game and dining table, we pay tribute to all styles with one goal in mind—perfection.

With our design and construction teams working under one roof, we are able to offer each client the option to enjoy an exclusive custom table in a one-of-a-kind design. We can customize sizes and finishes. We can change colors and materials. We can add a company logo. For the client whose game room is designed around a specific sports franchise or a favorite film, we can add a movie or a team logo. Many of our buyers want to be involved in the process, and we have a unique system in place that allows each client to track the progress of a custom order from start to finish.

Much of our success at Elevate Customs is due to the fact that we truly care about our customers. We listen to our clients' needs, we respect their unique design aesthetics, and we work tirelessly to ensure that every customer is 100% satisfied with the product and with our level of customer service. We care as much about building long-lasting relationships as we do about building the tables we sell.

At Elevate Customs, we bridge the gap between art and function by fusing gaming, entertainment, and design in a way that's never been done before. Join us on our journey—together, we can elevate your space.



OUR MISSION AT ELEVATE CUSTOMS

We design for the client who appreciates the finer things in life. He's the man who knows what it feels like to have all eyes on him as he turns the corner in his vintage Ferrari. She's the woman who jetted to Paris simply to pick up her newest Birkin bag from the Hermes atelier. It's the individual who covets craftsmanship and impeccable quality more so than labels and luxury status symbols, becoming the epitome of what the luxury lifestyle is truly all about.



At Elevate Customs, our mission surpasses that of simply making a luxury gaming table—our goal is to exceed expectations at every turn by creating objects of desire...objects worthy of both envy and notoriety. Walk into any room with one of our game tables and you'll instantly be drawn to its unmistakable sense of sophistication, style, and distinction. Pick up a pool cue or a table tennis paddle to engage in friendly competition and you're bound to find yourself getting lost in the thrill of the game. It's the combination of impeccable craftsmanship, excellent playability, and undeniable style that makes an Elevate Customs table one of a kind.



Our mission is to provide the most discerning clients around the world with superior designs crafted by the most-skilled artisans in the industry. High-end clients across the globe have grown accustomed to customizing everything from suits and jewelry to cars and vacation homes. We extend the invitation to those same individuals by affording them the opportunity to create a custom gaming table that the entire family can enjoy. Elevate Customs tables are designed to appeal to modern-day kings and queens, and anyone who's ever played on one agrees: it doesn't get any better than this.



www.ElevateCustoms.com

JOIN US ON OUR JOURNEY
AND LET US
ELEVATE YOUR SPACE



We work with one clear vision in mind: to bridge the gap between art and function by fusing gaming, entertainment, and design in a way that's never been done before. With our always-evolving collection of art-inspired tables and our unique ability to produce one-of-a-kind custom-crafted creations, each piece is made with the same intention: to provide the client with a truly remarkable piece that exudes artistry, functionality, and superior playability.

From our sales force to our designers to our master craftsmen, the Elevate Customs team is proud to have the ability to work hand-in-hand with each and every customer. Some of the greatest pieces we've ever created have been the result a close collaboration with a specific client, where we enmesh our design knowledge with the client's personal aesthetic to incorporate specific colors, logos, finishes, and details.

Clients can choose to be intimately involved with the creation of their table or take a more hands-off approach and leave the details to us. At Elevate Customs, we do more than offer clients the option to customize the table of their dreams—we allow them to customize the entire experience from the inception of the design to the end stages of development.

The end result? A game table that everyone can be proud of.



FEATURED IN:

Calabasas Style

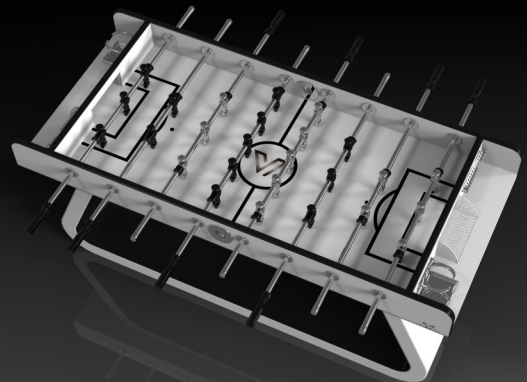
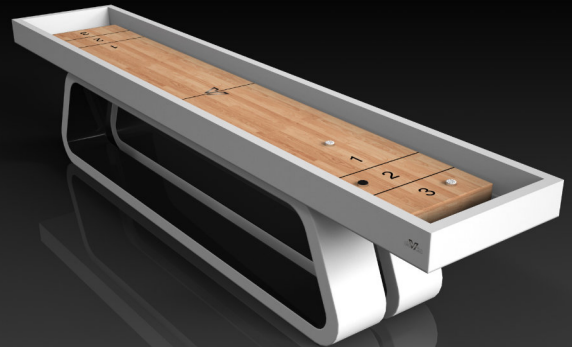
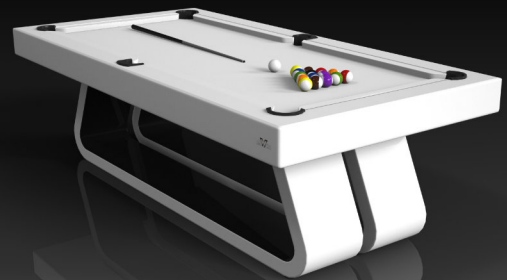
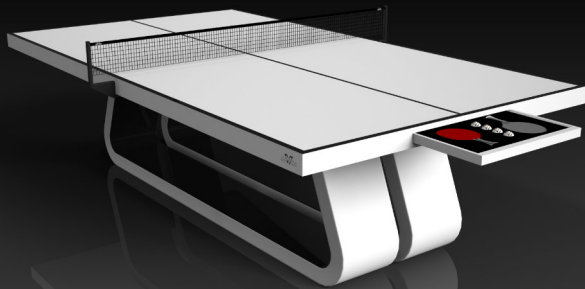
Hidden Hills Magazine

Museum of Ice Cream



PRODUCT PORTFOLIO

Our exclusive custom game tables embody the contemporary aesthetic. Perfect for residential, corporate, and commercial use, every design in the collection is completely customizable to fit seamlessly into your unique space. Whether you take up the occasional game or engage in professional tournament-style play, our tables offer form and function to meet the demands of a global clientele.



Visit www.ElevateCustoms.com
to see all of our Exclusive Designs!

GET TO KNOW OUR TEAM AT ELEVATE CUSTOMS



MARIANNA
LUMMER

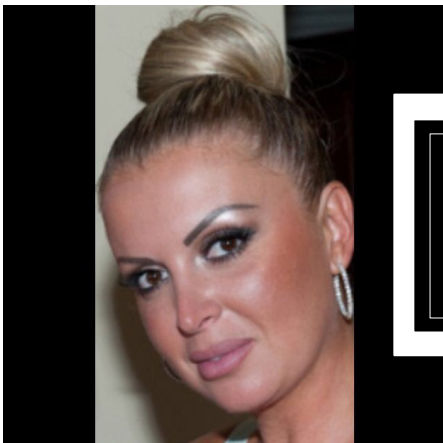
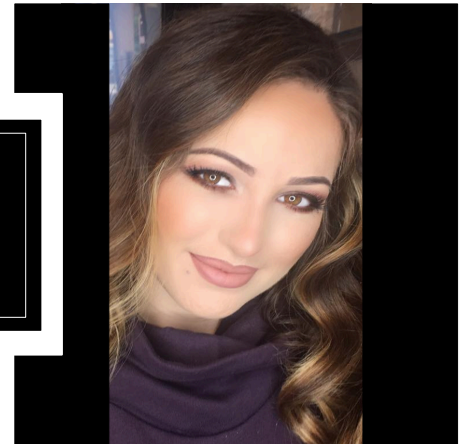
SALES MANAGER

With years of experience in selling to the luxury client, Marianna is a born leader with the keen ability to sell product directly to her own accounts and manage a team of experienced salespeople with multiple clients in their portfolios. She drives the sales force to provide clients with an impeccable level of professionalism and personal service, ensuring that each client is 100% satisfied with their purchase of our product.

OPERATIONS COORDINATOR

As an expert in logistics and operations, Lorraine ensures that the various players on the Elevate Customs team work in complete concert with one another. With her years of experience coupled with her passion for providing the finest designs for the luxury customer, Lorraine coordinates all elements of the business, making sure that everyone in design, production, sales, marketing, shipping, and IT is working together with exacting precision.

LORRAINE
SPEKTOR



NELLY
COBOS

DESIGNER SPECIALIST

Nelly works hand-in-hand with interior designers and professional design firms in order to conceptualize, customize, and create game tables for clients in search of something truly unique. With her years of experience in various aspects of design, sales, and customer relations, she builds and strengthens the relationships we've forged with the industry-leading designers that forecast and dictate the most coveted interior design trends of the moment.



FREQUENTLY ASKED QUESTIONS



1. How do I order a table?

Some people come to us and know exactly what they want and what size, color and design and are immediately ready for an invoice. Others need assistance walking through the specifications: determining the size table that works best for them, selecting a style, stain color, cloth color, wood, table top style and other special features. We welcome everyone and are happy to walk you through the entire process from start to finish.

2. What is a convertible pool table?

A convertible pool table is a dual purpose pool table that can be converted into a single (dining or table tennis) or dual (dining and table tennis) conversion top. This offers your work space the perfect size conference table or your home a large size dining table option. We would construct the table tennis conversion top to sit flush and give the finished table a solid finish and look.

3. What is your lead-time?

We request a lead-time of 8-12 weeks. Each table is made by hand and each step goes through intensive quality control and therefore takes some time to perfect. We do understand that some projects may be time sensitive and would do our best to accommodate certain requests.

4. Where are your tables built?

All Elevate Customs tables are built and designed in Los Angeles, CA. We take pride in every single curve, grain, and stain for each table that is made and only trust local craftsman allowing us to oversee every progress step.

5. Do you offer Interior Design Trade Discount?

Yes, we offer a 10% discount. All that is required is for the Designer Form to be filled out with a valid trade license number attached.

6. How can we get in touch?

Please feel free to give us a call at 888.353.8829 or email at info@elevatecustoms.com with any questions or media requests. We look forward to Elevating Your Space!

